

GUTH VENTILE Check valve Series: 5093 Stainless steel AISI 316L Butt weld NEN EN10357 serie A



Characteristics

Series: 5093
Norm: EN (DIN)
Construction type: Straight
Housing material: Stainless steel 316L
Material quality: 1.4404
Internal roughness value: $Ra \leq 0.8 \mu m$
External roughness value: $Ra \leq 0.8 \mu m$
Connection: Butt weld
Standard welding connection: DIN 11850
With spring: Yes
Minimum medium temperature (continuous): 1 °C
Maximum medium temperature (continuous): 120 °C
Minimum opening pressure: 0.15 bar

Application

- Food products.
- Dairy.
- Milk.
- Beer.
- CIP.
- Fruit juice.
- Water.
- Sauces.
- Oils.
- Recommended in: Food & Beverages, Food primary processes [contact with food]

Technical Information

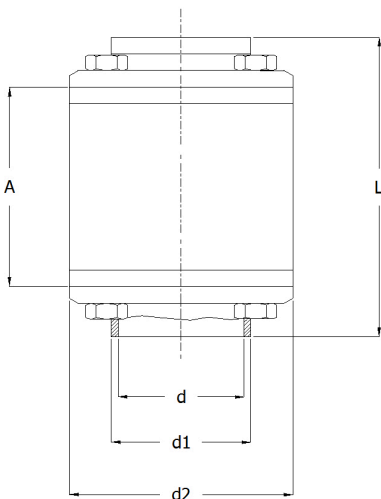
- Sealing in accordance with EC1935/2004.
- Sterilisation temperature 140 C° [short-time].

Options

- Execution in stainless steel AISI 304 [1.4301].
- On request available with 3.1 certificate.

Size table:

DN	d	d1	d2	A	L	Weight
	mm	mm	mm	mm	mm	kg
DN25	26	29	74	61	96	1.95
DN32	32	35	78	60	108	2.05
DN40	38	41	78	60	112	2.3
DN50	50	53	94	71	115	3.2
DN65	66	70	113	80	129	4.35
DN80	81	85	133	82	116	6.15
DN100	100	104	159	95	132	8.2



Disclaimer: The content of this document has been composed with the utmost care. However, it is possible that certain information changes over time, becomes inaccurate or incomplete. ERIKS does not guarantee that the information provided on this document is up to date, accurate and complete; the information provided is not intended to be advice. ERIKS shall never be liable for damage resulting from the use of the information provided.

Non-return Valves | Non-return Valves with Welding Connection

Nominal inner diameter	External tube diameter of connection	Wall thickness, connection	Pressure rating	Face to Face length	Valve shape	Sealing	Material disc	Maximum pressure difference at 20 °C	Max. operating pressure	Article
	mm	mm		mm				bar	bar	
DN25	29	1.5	PN16	96	Spring-loaded	EPDM	Stainless steel 316L [1.4404]	16	16	14609798
DN32	35	1.5	PN16	108	Spring-loaded	EPDM	Stainless steel 316L [1.4404]	16	16	14609799
DN40	41	1.5	PN16	112	Spring-loaded	EPDM	Stainless steel 316L [1.4404]	16	16	14609800
DN50	53	1.5	PN16	115	Spring-loaded	EPDM	Stainless steel 316L [1.4404]	16	16	14609801
DN65	70	2	PN16	129	Spring-loaded	EPDM	Stainless steel 316L [1.4404]	16	16	14609802
DN80	85	2	PN10	116	Spring-loaded	EPDM	Stainless steel 316L [1.4404]	10	10	14609803
DN100	104	2	PN6	132	Spring-loaded	EPDM	Stainless steel 316L [1.4404]	10	6	14609804

Disclaimer: The content of this document has been composed with the utmost care. However, it is possible that certain information changes over time, becomes inaccurate or incomplete. ERIKS does not guarantee that the information provided on this document is up to date, accurate and complete; the information provided is not intended to be advice. ERIKS shall never be liable for damage resulting from the use of the information provided.