

## ASCO Pilot valve box series 353 series SG110A aluminium/ABS normally closed



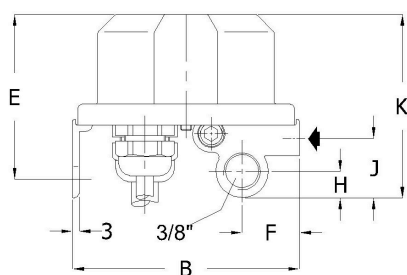
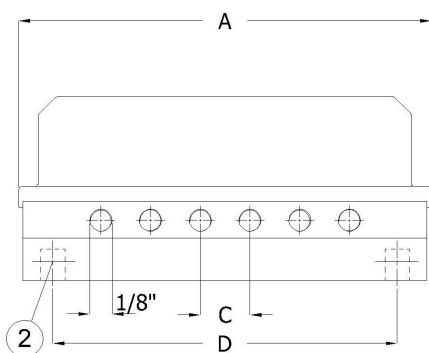
### Characteristics

**Series:** SG110A  
**Function:** Normally closed (NC)  
**Actuation:** Direct-acting  
**Orifice:** 3.6 mm  
**Kvs value:** 0.35 m<sup>3</sup>/h  
**Minimum pressure difference:** 0 bar  
**Maximum pressure difference:** 8.5 bar  
**Supply voltage heating:** 230V AC  
**Heating power:** 80 W



### Characteristics (2)

**Housing material:** ABS/Aluminium  
**Sealing:** NBR  
**Level of protection (IP value):** IP65  
**Explosion-proof:** No  
**SIL certified:** No  
**Medium temperature:** From -20 °C to 80 °C



### Size table:

Orifice	Number of units	A	B	C	D	E	H	J	K
mm		mm	mm	mm	mm	mm	mm	mm	mm
3.6	2-6	187	103	22.5	156	77	12	27	83
3.6	7-12	322	103	22.5	266	77	12	27	83

Number of valves	Size process connection	Process connection	Coil type	Supply voltage	Power	Starting power	Heating	Number of heating elements	Ambient temperature	Article
3	1/8" (6)	Internal thread (BSPP)	400137-642	24V DC	22 W		No		From -20 °C to 55 °C	13035390
3	1/8" (6)	Internal thread (BSPP)	400137-642	24V DC	22 W		Yes	1	From -20 °C to 55 °C	14010964
3	1/8" (6)	Internal thread (BSPP)	400137-697	230V AC	10 W	20.4 VA	No		From -20 °C to 85 °C	13022340
4	1/8" (6)	Internal thread (BSPP)	400137-642	24V DC	22 W		No		From -20 °C to 55 °C	12254739
4	1/8" (6)	Internal thread (BSPP)	400137-697	230V AC	10 W	20.4 VA	No		From -20 °C to 85 °C	14521273

Disclaimer: The content of this document has been composed with the utmost care. However, it is possible that certain information changes over time, becomes inaccurate or incomplete. ERIKS does not guarantee that the information provided on this document is up to date, accurate and complete; the information provided is not intended to be advice. ERIKS shall never be liable for damage resulting from the use of the information provided.

Number of valves	Size process connection	Process connection	Coil type	Supply voltage	Power	Starting power	Heating	Number of heating elements	Ambient temperature	Article
5	1/8" (6)	Internal thread (BSPP)	400137-642	24V DC	22 W		No		From -20 °C to 55 °C	11389015
5	1/8" (6)	Internal thread (BSPP)	400137-642	24V DC	22 W		Yes	1	From -20 °C to 55 °C	13688229
5	1/8" (6)	Internal thread (BSPP)	400137-697	230V AC	10 W	20.4 VA	Yes	1	From -20 °C to 85 °C	14261235
6	1/8" (6)	Internal thread (BSPP)	400137-642	24V DC	22 W		No		From -20 °C to 55 °C	11593610
6	1/8" (6)	Internal thread (BSPP)	400137-642	24V DC	22 W		Yes	1	From -20 °C to 55 °C	13689166
6	1/8" (6)	Internal thread (BSPP)	400137-697	230V AC	10 W	20.4 VA	No		From -20 °C to 85 °C	12519903
7	1/8" (6)	Internal thread (BSPP)	400137-642	24V DC	22 W		No		From -20 °C to 55 °C	14157442
8	1/8" (6)	Internal thread (BSPP)	400137-642	24V DC	22 W		No		From -20 °C to 55 °C	12379080
9	1/8" (6)	Internal thread (BSPP)	400137-642	24V DC	22 W		No		From -20 °C to 55 °C	14480714
10	1/8" (6)	Internal thread (BSPP)	400137-642	24V DC	22 W		No		From -20 °C to 55 °C	11389014
10	1/8" (6)	Internal thread (BSPP)	400137-697	230V AC	10 W	20.4 VA	No		From -20 °C to 85 °C	11542375
12	1/8" (6)	Internal thread (BSPP)	400137-642	24V DC	22 W		No		From -20 °C to 55 °C	11897526

Disclaimer: The content of this document has been composed with the utmost care. However, it is possible that certain information changes over time, becomes inaccurate or incomplete. ERIKS does not guarantee that the information provided on this document is up to date, accurate and complete; the information provided is not intended to be advice. ERIKS shall never be liable for damage resulting from the use of the information provided.