



## ASCO Solenoid valve 2/2 Type: 32208 series 210D brass internal thread

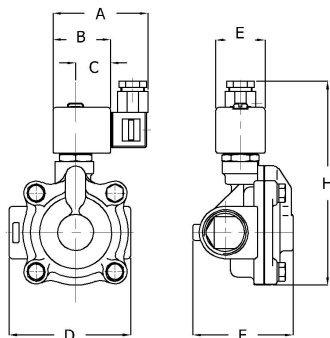
### Characteristics

**Series:** 210  
**Type:** 32208  
**Function:** Normally open (NO)  
**Actuation:** Indirect-acting  
**Electrical connection:** Plug EN 175301-803 type A  
**Max. viscosity:** 65 mm<sup>2</sup>/s  
**Housing material:** Brass  
**Sealing:** NBR  
**Material coil housing:** Epoxy  
**Material shorting ring:** Copper  
**Membrane material:** NBR

### Characteristics [2]

**Working time:** 100 %  
**Level of protection (IP value):** IP65  
**Explosion-proof:** No  
**SIL certified:** No  
**Medium temperature:** From -20 °C to 85 °C  
**Ambient temperature:** From -20 °C to 75 °C

### Size table:



Size	A	B	C	D	E	F	H	Weight
	mm	mm	mm	mm	mm	mm	mm	kg
1"	91	56	33	95	50	79	165	2.1

Size process connection	Process connection	Orifice	Kvs value	Minimum pressure difference	Maximum pressure difference	Coil type	Supply voltage	Power	Starting power	Article
		mm	m <sup>3</sup> /h	bar	bar					
1" [25]	Internal thread (BSPP)	25	5.7	0.35	16	400525-101	24V AC	15.4 W / 33.6 VA	110 VA	14545546
1" [25]	Internal thread (BSPP)	25	5.7	0.35	16	400625-142	24V DC	12 W [hot] - 16.8 W [cold]		14545548
1" [25]	Internal thread (BSPP)	25	5.7	0.35	16	400525-117	230V AC	15.4 W / 33.6 VA	110 VA	14545547

Disclaimer: The content of this document has been composed with the utmost care. However, it is possible that certain information changes over time, becomes inaccurate or incomplete. ERIKS does not guarantee that the information provided on this document is up to date, accurate and complete; the information provided is not intended to be advice. ERIKS shall never be liable for damage resulting from the use of the information provided.