



## STAUFF Clamp body PA-R polyamide with elastomer insert Standard series

### Characteristics

**Series:** Standard

**Colour:** Black

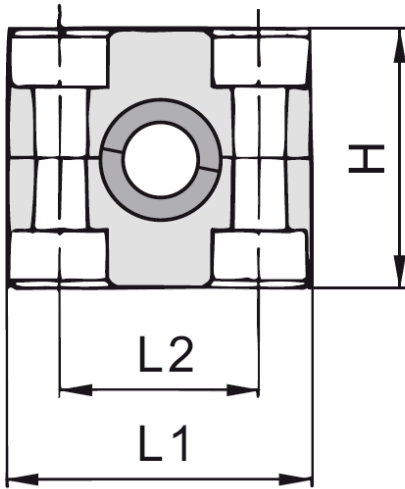
**Profile:** Elastomer insert

**Tension clearance:** No

**DIN Standard:** DIN 3015-1

### Size table:

Group	H mm	L1 mm	L2 mm	Width mm
4	41.2	59	40	30
6	64.5	86	66	30



Suitable for pipe diameter mm	Group	Material	Article
10	4	Polyamide	11355792
12	4	Polyamide	11355793
12.7	4	Polyamide	11355794
14	4	Polyamide	11355795
15	4	Polyamide	11355796
16	4	Polyamide	11355797
17.2	4	Polyamide	11355798
17.2	4	Polyamide	11356114
18	4	Polyamide	11355799
19	4	Polyamide	11355800
20	6	Polyamide	11355801
21.3	6	Polyamide	11355802
22	6	Polyamide	11355803
25	6	Polyamide	11355804
28	6	Polyamide	11355805
30	6	Polyamide	11355806

Disclaimer: The content of this document has been composed with the utmost care. However, it is possible that certain information changes over time, becomes inaccurate or incomplete. ERIKS does not guarantee that the information provided on this document is up to date, accurate and complete; the information provided is not intended to be advice. ERIKS shall never be liable for damage resulting from the use of the information provided.