



## STAUFF Clamp body PA-R polyamide for elastomer insert Standard series

### Characteristics

**Series:** Standard

**Colour:** Black

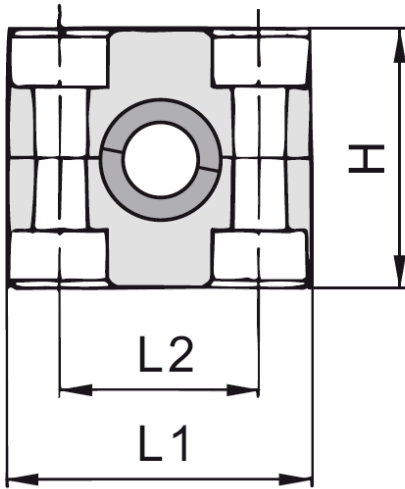
**Profile:** Elastomer insert

**Tension clearance:** No

**DIN Standard:** DIN 3015-1

### Size table:

| Group | H<br>mm | L1<br>mm | L2<br>mm | Width<br>mm |
|-------|---------|----------|----------|-------------|
| 4     | 41.2    | 59       | 40       | 30          |
| 6     | 64.5    | 86       | 66       | 30          |



| Group | Material  | Article  |
|-------|-----------|----------|
| 4     | Polyamide | 11357789 |
| 6     | Polyamide | 11356923 |

Disclaimer: The content of this document has been composed with the utmost care. However, it is possible that certain information changes over time, becomes inaccurate or incomplete. ERIKS does not guarantee that the information provided on this document is up to date, accurate and complete; the information provided is not intended to be advice. ERIKS shall never be liable for damage resulting from the use of the information provided.