



ASCO Solenoid valve 2/2 Type: 32300 Series: 210 Brass Pilot operated hung diaphragm Normally closed (NC)

Characteristics

Series: 210
Type: 32300
Process connection: Internal thread (BSPP)
Function: Normally closed (NC)
Actuation: Pilot operated hung diaphragm
Minimum pressure difference: 0 bar
Maximum pressure difference: 16 bar
Electrical connection: Plug EN 175301-803 type A
Max. viscosity: 65 mm²/s
Housing material: Brass
Material coil housing: Epoxy
Material shorting ring: Copper
Working time: 100 %
Level of protection (IP value): IP65
Explosion-proof: No
SIL certified: No

Application

- In systems with a small differential pressure or as a drain from a pressureless tank. Neutral gases.
- Neutral liquids.
- Hydraulic oils.
- With FKM/FPM seals suitable for biofuels

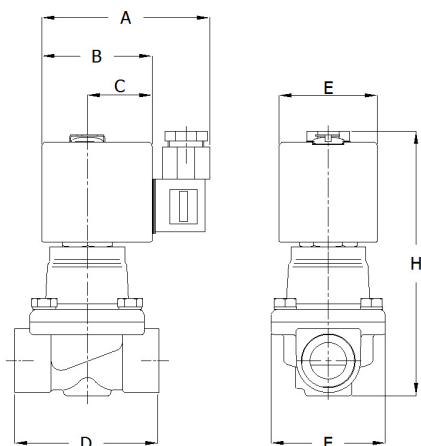
Technical Information

- Robust construction.
- New design suitable for up to 16 bar.
- Response time 15 to 120 ms.

Options

- Emergency manual control version MO.
- Seals and membrane in EPDM or CR.
- Oxygen, oil and grease-free version.
- Other supply voltages.
- Explosion-proof versions.

Size table:



| Type | Size | A mm | B mm | C mm | D mm | E mm | F mm | H mm | Weight kg |
|-------------------|------|---------|---------|---------|---------|---------|---------|---------|--------------|
| 210C493/494 AC | 1/2" | 86 | 51 | 30 | 70 | 45 | 58 | 112 | 0.9 |
| 210C493/494 DC | 1/2" | 91 | 56 | 33 | 70 | 50 | 58 | 107 | 1 |
| 210B454 AC/DC | 1" | 91 | 56 | 33 | 95 | 50 | 83 | 134 | 2 |
| 210D495 AC | 3/4" | 91 | 56 | 33 | 71 | 50 | 58 | 119 | 1 |
| 210D495 AC | 3/4" | 86 | 51 | 30 | 71 | 45 | 58 | 119 | 1 |
| 210D495 DC | 3/4" | 91 | 56 | 33 | 71 | 50 | 58 | 115 | 1.1 |
| 210C493/494 AC | 3/8" | 86 | 51 | 30 | 70 | 45 | 58 | 112 | 0.9 |
| 210C493/494 DC | 3/8" | 91 | 56 | 33 | 70 | 50 | 58 | 107 | 1 |

| Size process connection | Orifice mm | Kvs value m ³ /h | Coil type | Supply voltage | Power | Starting power | Sealing | Membrane material | Medium temperature | Article |
|-------------------------|---------------|--------------------------------|------------|----------------|----------------|----------------|---------|-------------------|----------------------|----------|
| 1/2" (15) | 16 | 3.4 | 400425-101 | 24V AC | 10.5 W / 23 VA | 5 VA | NBR | NBR | From -20 °C to 85 °C | 14535391 |

Disclaimer: The content of this document has been composed with the utmost care. However, it is possible that certain information changes over time, becomes inaccurate or incomplete. ERIKS does not guarantee that the information provided on this document is up to date, accurate and complete; the information provided is not intended to be advice. ERIKS shall never be liable for damage resulting from the use of the information provided.

| Size process connection | Orifice mm | Kvs value m ³ /h | Coil type | Supply voltage | Power | Starting power | Sealing | Membrane material | Medium temperature | Article |
|-------------------------|------------|-----------------------------|------------|----------------|----------------------------|----------------|---------|-------------------|-----------------------|----------|
| 1/2" [15] | 16 | 3.4 | 400625-142 | 24V DC | 12 W [hot] - 16.8 W [cold] | | FPM | FPM | From -10 °C to 100 °C | 14535415 |
| 1/2" [15] | 16 | 3.4 | 400625-142 | 24V DC | 12 W [hot] - 16.8 W [cold] | | NBR | NBR | From -20 °C to 85 °C | 14535413 |
| 1/2" [15] | 16 | 3.4 | 400425-117 | 230V AC | 10.5 W / 23 VA | 5 VA | FPM | FPM | From -10 °C to 100 °C | 14535414 |
| 1/2" [15] | 16 | 3.4 | 400425-117 | 230V AC | 10.5 W / 23 VA | 5 VA | NBR | NBR | From -20 °C to 85 °C | 14535392 |
| 1" [25] | 25 | 9.6 | 400525-101 | 24V AC | 15.4 W / 33.6 VA | 110 VA | NBR | NBR | From -20 °C to 85 °C | 14535423 |
| 1" [25] | 25 | 9.6 | 400625-142 | 24V DC | 12 W [hot] - 16.8 W [cold] | | FPM | FPM | From -10 °C to 100 °C | 14535422 |
| 1" [25] | 25 | 9.6 | 400625-242 | 24V DC | 16.8 W [hot] - 23 W [cold] | | NBR | NBR | From -20 °C to 85 °C | 14535424 |
| 1" [25] | 25 | 9.6 | 400425-117 | 230V AC | 15.4 W / 33.6 VA | 110 VA | NBR | NBR | From -20 °C to 85 °C | 14535421 |
| 3/4" [20] | 19 | 4.7 | 400425-101 | 24V AC | 10.5 W / 23 VA | 5 VA | FPM | FPM | From -10 °C to 100 °C | 14535420 |
| 3/4" [20] | 19 | 4.7 | 400425-101 | 24V AC | 10.5 W / 23 VA | 5 VA | NBR | NBR | From -20 °C to 85 °C | 14535416 |
| 3/4" [20] | 19 | 4.7 | 400625-142 | 24V DC | 12 W [hot] - 16.8 W [cold] | | NBR | NBR | From -20 °C to 85 °C | 14535418 |
| 3/4" [20] | 19 | 4.7 | 400425-117 | 230V AC | 10.5 W / 23 VA | 5 VA | FPM | FPM | From -10 °C to 100 °C | 14535419 |
| 3/4" [20] | 19 | 4.7 | 400425-117 | 230V AC | 10.5 W / 23 VA | 5 VA | NBR | NBR | From -20 °C to 85 °C | 14535417 |
| 3/8" [10] | 16 | 2.6 | 400425-101 | 24V AC | 10.5 W / 23 VA | 5 VA | NBR | NBR | From -20 °C to 85 °C | 14535388 |
| 3/8" [10] | 16 | 2.6 | 400625-142 | 24V DC | 12 W [hot] - 16.8 W [cold] | | NBR | NBR | From -20 °C to 85 °C | 14535390 |
| 3/8" [10] | 16 | 2.6 | 400425-117 | 230V AC | 10.5 W / 23 VA | 5 VA | NBR | NBR | From -20 °C to 85 °C | 14535389 |

Disclaimer: The content of this document has been composed with the utmost care. However, it is possible that certain information changes over time, becomes inaccurate or incomplete. ERIKS does not guarantee that the information provided on this document is up to date, accurate and complete; the information provided is not intended to be advice. ERIKS shall never be liable for damage resulting from the use of the information provided.