



## ADCAPURE Ball valve Series: M3HP Type: 8844 Stainless steel Butt welded loose end DIN 11850 PN63/100

Three-piece M3HP ball valves are "high-purity" shut-off valves that have been polished and cleaned inside and outside for use with ultra-pure and pure steam, condensate and other clean gases and liquids used in very clean and aseptic processes.

The ball valves have a "real bore" design with a floating ball, meaning that the passage for the ball is the same size as the inside diameter of the connection without clogging or narrowing.

### Characteristics

**Series:** M3HP

**Type:** 8844

**Norm:** EN (DIN)

**Construction type:** 2-way

**Housing construction:** 3-part

**Housing material:** Stainless steel

**Material quality:** SS316L

**Internal roughness value:** Ra 0.51 µm

**External roughness value:** Ra 0.76 µm

**Connection:** Butt welded loose end

**Standard welding connection:** DIN 11850

**Top flange standard:** ISO 5211

**Seat material:** TFM 1600

**Spindle material:** 1.4404

**Primary spindle seal material:** TFM 1600

**Secondary spindle seal material:** FPM (FKM)

**Tertiary spindle seal material:** TFM 1600

**Body seal:** PTFE

**Material connection piece:** 1.4404

**Actuator material:** 1.4301

**Minimum medium temperature (continuous):** -29 °C

**Maximum medium temperature (continuous):** 220 °C

### Application

- For pharmaceuticals, biotechnology, semiconductor, cosmetics, fine chemicals, food and beverage industry.
- The ball valves can only be used as an open/closed valve.
- Recommended in: Pharma

### Technical Information

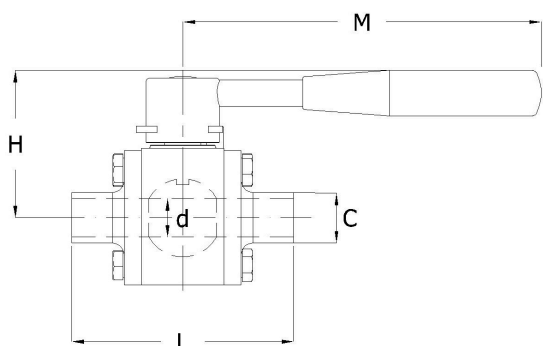
- Butt weld connection according to DIN 11850, extended for orbital welding with rotatable weld ends (360° rotation after mounting).
- Concept with floating ball.
- Made entirely of solid bar materials.
- The 3-piece construction can be retained without having to be removed from the piping.
- Bidirectional.
- Upper flange according to ISO-5211 (only in sizes ≥ 3/4").
- Fitted with round handle.
- Pressure class PN100 for the 1/2" and 3/4" versions and PN63 for the 1" to 2" versions.
- Internal wet parts Ra ≤ 0.51 microns, external Ra ≤ 0.76 microns and ultrasonic cleaning.
- Assemble and pack in a certified cleanroom in accordance with ISO 14644-1.

### Construction

- Three-piece housing construction.
- Real bore planning.
- Equipped with antistatic device between ball and housing.
- Anti-blow out spindle.

### Options

- Available with either a pneumatic or electric actuator.
- Position feedback for automated ball valves.
- DN10 and DN15 with adapter for ISO5211 mounting.
- Other sealing materials.
- Degrease before using oxygen.
- Cavity filler.
- With extension spindle for insulation, manual or with actuator and optionally with leak detection connection.
- Connections according to DIN 32676 three terminals or to ASME BPE (butt weld or three terminals).



Size table:

DN	d	L	H	M	C	Weight
	mm	mm	mm	mm	mm	kg
DN10	10	102	48	130	13	0.8
DN15	16	114	53	130	19	1.1
DN20	20	127	68	165	23	2.2
DN25	26	135	73	165	29	2.9
DN32	32	153	86	200	35	5.1
DN40	38	161	90	200	41	6.3
DN50	50	178	97	200	53	8.5

Pressure and temperature range with TFM1600 seats

Size	-29	0	50	100	150	200	220	[°C]
DN10 - DN20	100	100	100	79	44	10	0	[bar]
DN25 - DN50	63	63	63	49	30	10	0	[bar]

Nominal inner diameter	External tube diameter of connection	Wall thickness, connection	Pressure rating	Face to Face norm	Manual operation	Mounting flange	Bore	With locking device	Material ball	Article
	mm	mm								
DN10	13	1.5	PN100	Manufacturer standard	Handle	F03	True bore	No	1.4404	14523803
DN15	19	1.5	PN100	Manufacturer standard	Handle	F03	True bore	No	1.4404	14523793
DN20	23	1.5	PN100	Manufacturer standard	Handle	F04	True bore	No	1.4404	14523794
DN25	29	1.5	PN63	Manufacturer standard	Handle	F04	True bore	No	1.4404	14523795
DN32	35	1.5	PN63	Manufacturer standard	Handle	F05	True bore	No	1.4404	14523804
DN40	41	1.5	PN63	Manufacturer standard	Handle	F05	True bore	No	1.4404	14523796
DN50	53	1.5	PN63	Manufacturer standard	Handle	F05	True bore	No	1.4404	14523797

Disclaimer: The content of this document has been composed with the utmost care. However, it is possible that certain information changes over time, becomes inaccurate or incomplete. ERIKS does not guarantee that the information provided on this document is up to date, accurate and complete; the information provided is not intended to be advice. ERIKS shall never be liable for damage resulting from the use of the information provided.