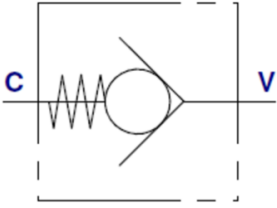


## VOSS Standard non-return valve metric VNROTP/VNROTPC



- Standard non-return valves
- Flow direction to threaded stud
- Male thread: metric fine thread, cylindrical
- Threaded stud: ISO 9974-2 Form E
- Sealing type: Profile sealing ring PEFLEX
- Sealing material: Standard NBR
- Tube coupling: 24° in acc. with ISO 8434-1
- Opening pressure 1 bar



### Characteristics

**Version:** Inline mounting

**Material:** Steel

**Flow direction:** Flow towards male stud end

**Sealing:** Profile sealing ring PEFLEX (Form E)

Opening pressure	Max. operating pressure bar	Connections	Options	Article
1 bar	100	28L + M33x2.0		11452098
1 bar	100	28L + M33x2.0	W/o nut + cutting ring	11452078
1 bar	100	35L + M42x2.0		11452099
1 bar	100	35L + M42x2.0	W/o nut + cutting ring	11452079
1 bar	100	42L + M48x2.0		11452100
1 bar	100	42L + M48x2.0	W/o nut + cutting ring	11452080
1 bar	160	18L + M22x1,5		11452096
1 bar	160	18L + M22x1,5	W/o nut + cutting ring	11452076
1 bar	160	22L + M26x1,5		11452097
1 bar	160	22L + M26x1,5	W/o nut + cutting ring	11452077
1 bar	250	6L + M10x1.0	W/o nut + cutting ring	11452071
1 bar	250	8L + M12x1,5		11452092
1 bar	250	8L + M12x1,5	W/o nut + cutting ring	11452072
1 bar	250	10L + M14x1,5		11452093
1 bar	250	10L + M14x1,5	W/o nut + cutting ring	11452073
1 bar	250	12L + M16x1,5		11452094
1 bar	250	12L + M16x1,5	W/o nut + cutting ring	11452074
1 bar	250	15L + M18x1,5		11452095
1 bar	250	15L + M18x1,5	W/o nut + cutting ring	11452075
1 bar	250	30S + M42x2.0		11452109
1 bar	250	30S + M42x2.0	W/o nut + cutting ring	11452089
1 bar	250	38S + M48x2.0		11452110
1 bar	250	38S + M48x2.0	W/o nut + cutting ring	11452090
1 bar	400	16S + M22x1,5		11452106
1 bar	400	16S + M22x1,5	W/o nut + cutting ring	11452086
1 bar	400	20S + M27x2.0		11452107
1 bar	400	20S + M27x2.0	W/o nut + cutting ring	11452087
1 bar	400	25S + M33x2.0		11452108
1 bar	400	25S + M33x2.0	W/o nut + cutting ring	11452088
1 bar	630	6S + M12x1,5		11452101
1 bar	630	6S + M12x1,5	W/o nut + cutting ring	11452081
1 bar	630	8S + M14x1,5		11452102

Disclaimer: The content of this document has been composed with the utmost care. However, it is possible that certain information changes over time, becomes inaccurate or incomplete. ERIKS does not guarantee that the information provided on this document is up to date, accurate and complete; the information provided is not intended to be advice. ERIKS shall never be liable for damage resulting from the use of the information provided.

Opening pressure	Max. operating pressure bar	Connections	Options	Article
1 bar	630	8S + M14x1,5	W/o nut + cutting ring	11452082
1 bar	630	10S + M16x1,5		11452103
1 bar	630	10S + M16x1,5	W/o nut + cutting ring	11452083
1 bar	630	12S + M18x1,5		11452104
1 bar	630	12S + M18x1,5	W/o nut + cutting ring	11452084
1 bar	630	14S + M20x1,5		11452105
1 bar	630	14S + M20x1,5	W/o nut + cutting ring	11452085

Disclaimer: The content of this document has been composed with the utmost care. However, it is possible that certain information changes over time, becomes inaccurate or incomplete. ERIKS does not guarantee that the information provided on this document is up to date, accurate and complete; the information provided is not intended to be advice. ERIKS shall never be liable for damage resulting from the use of the information provided.