

## HAVIT SAE socket weld flange companion GFS



### Characteristics

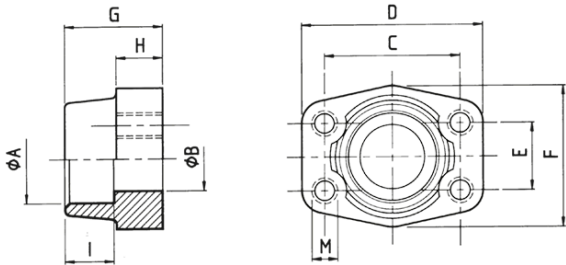
**Series:** GFS

**Flange type:** SAE socket weld flange companion

**Material:** Steel

### Size table:

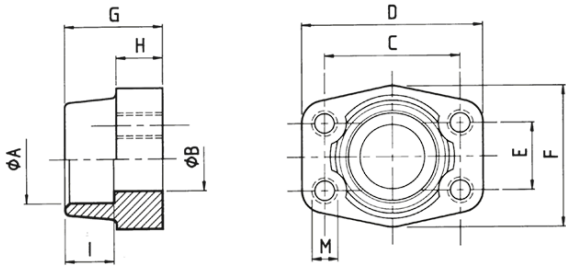
Pressure class	SAE flange size	LEG0-0295	B	C	D	E	F	G	H
psi	in	mm	mm	mm	mm	mm	mm	mm	mm
3000	1/2	21.6	13	38.1	54	17.5	46	36	16
3000	1/2	20.3	13	38.1	54	17.5	46	36	16
3000	3/4	25.3	19	47.6	65	22.3	50	36	18
3000	3/4	27.2	19	47.6	65	22.3	50	36	18
3000	1	34	25	52.4	70	26.2	55	38	18
3000	1	30.3	25	52.4	70	26.2	55	38	18
3000	1.1/4	38.3	32	58.7	79	30.2	68	41	21
3000	1.1/4	42.8	32	58.7	79	30.2	68	41	21
3000	1.1/2	48.6	38	69.9	93	35.7	78	45	25
3000	1.1/2	50.5	38	69.9	93	35.7	78	45	25
3000	2	61	51	77.8	102	42.9	90	45	25
3000	2.1/2	76.6	63	88.9	114	50.8	105	50	25
3000	3	90.5	73	106.4	134	61.9	124	50	27
3000	3.1/2	103	89	120.7	152	69.9	136	48	27
3000	4	115.5	99	130.2	162	77.8	146	48	27
3000	5	142	120	152.4	184	92.1	181	50	28
6000	1/2	21.6	13	40.5	54	18.2	46	36	16
6000	1/2	17.5	13	40.5	54	18.2	46	36	16
6000	1/2	20.3	13	40.5	54	18.2	46	36	16
6000	3/4	25.3	19	50.8	71	23.8	55	35	21
6000	3/4	27.2	19	50.8	71	23.8	55	35	21
6000	1	34	25	57.2	81	27.8	65	42	25
6000	1.1/4	42.8	32	66.6	95	31.8	78	45	27
6000	1.1/4	38.3	26	66.6	95	31.8	78	45	27
6000	1.1/4	38.3	28	66.6	95	31.8	78	45	27
6000	1.1/4	38.3	32	66.6	95	31.8	78	45	27
6000	1.1/2	50.5	38	79.3	112	36.5	94	50	30
6000	1.1/2	48.6	38	79.3	112	36.5	94	50	30



Disclaimer: The content of this document has been composed with the utmost care. However, it is possible that certain information changes over time, becomes inaccurate or incomplete. ERIKS does not guarantee that the information provided on this document is up to date, accurate and complete; the information provided is not intended to be advice. ERIKS shall never be liable for damage resulting from the use of the information provided.

Size table:

Pressure class	SAE flange size	LEG0-0295	B	C	D	E	F	G	H
6000	2	61	51	96.8	134	44.5	114	65	37
6000	2.1/2	76.6	63	123.8	180	58.8	152	80	45
6000	3	90.5	73	152.4	208	71.6	178	90	55



Pressure class psi	SAE flange size in	Surface protection	Max. operation pressure bar	Article
3000	1/2	Untreated	350	14480172
3000	1/2	Untreated	350	14717170
3000	3/4	Untreated	350	14717194
3000	3/4	Untreated	350	14309808
3000	1	Untreated	320	14309855
3000	1	Untreated	320	14717198
3000	1.1/4	Untreated	280	14717201
3000	1.1/4	Untreated	280	14309914
3000	1.1/2	Untreated	210	14309966
3000	1.1/2	Untreated	210	14717219
3000	2	Untreated	210	14310025
3000	2.1/2	Untreated	175	14310076
3000	3	Untreated	160	14310119
3000	3.1/2	Untreated	35	14480176
3000	4	Untreated	35	14310176
3000	5	Untreated	35	14310201
6000	1/2	Untreated	420	14310242
6000	1/2	Untreated	420	14310246
6000	1/2	Untreated	420	14717172
6000	3/4	Untreated	420	14717196
6000	3/4	Untreated	420	14310295
6000	1	Untreated	420	14310335
6000	1.1/4	Untreated	420	14310376
6000	1.1/4	Untreated	420	14717216
6000	1.1/4	Untreated	420	14717217
6000	1.1/4	Untreated	420	14717215
6000	1.1/2	Untreated	420	14717221
6000	1.1/2	Untreated	420	14310411
6000	2	Untreated	420	14310451
6000	2.1/2	Untreated	420	14310480
6000	3	Untreated	420	14310492

Disclaimer: The content of this document has been composed with the utmost care. However, it is possible that certain information changes over time, becomes inaccurate or incomplete. ERIKS does not guarantee that the information provided on this document is up to date, accurate and complete; the information provided is not intended to be advice. ERIKS shall never be liable for damage resulting from the use of the information provided.