

HAVIT SAE butt weld flange companion metric pipes GFS



Characteristics

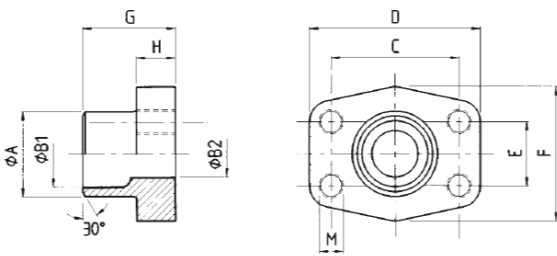
Series: GFS

Flange type: SAE butt weld flange companion

Material: Steel

Size table:

Pressure class	SAE flange size	A	B1	B2	C	D	E	F	G
psi	in	mm	mm	mm	mm	mm	mm	mm	mm
3000	1/2	20	20	14	38.1	54	17.5	46	35
3000	1/2	22	22	13	38.1	54	17.5	46	35
3000	3/4	25	25	19	47.6	65	22.3	50	36
3000	3/4	28	28	19	47.6	65	22.3	50	36
3000	1	30	30	22	52.4	70	26.2	55	38
3000	1	35	35	25	52.4	70	26.2	55	38
3000	1.1/4	38	38	30	58.7	79	30.2	68	41
3000	1.1/4	43	43	31	58.7	79	30.2	68	41
3000	1.1/2	38	38	30	69.9	93	35.7	78	44
3000	1.1/2	42	42	36	69.9	93	35.7	78	44
3000	1.1/2	49	49	38	69.9	93	35.7	78	44
3000	2	61	61	49	77.8	102	42.9	90	45
3000	2.1/2	77	77	62	88.9	114	50.8	105	50
3000	3	77	77	62	106.4	134	61.9	125	51
6000	1/2	20	20	14	40.5	54	18.2	46	34
6000	3/4	20	20	14	50.8	71	23.8	55	35
6000	3/4	25	25	17	50.8	71	23.8	55	35
6000	1	30	30	22	57.2	81	27.8	65	42
6000	1.1/4	30	30	22	66.6	95	31.8	78	44
6000	1.1/4	38	38	26	66.6	95	31.8	78	44
6000	1.1/2	38	38	26	79.3	112	36.5	94	56
6000	1.1/2	49	49	32	79.3	112	36.5	94	56
6000	1.1/2	61	61	38	79.3	112	36.5	94	56
6000	2	61	61	40	96.8	134	44.5	114	65
6000	2	77	77	48	96.8	134	44.5	114	80



Pressure class	SAE flange size	Pipe size	Surface protection	Max. operation pressure	Article
psi	in	mm		bar	
3000	1/2	20 x 3	Untreated	350	14309760

Disclaimer: The content of this document has been composed with the utmost care. However, it is possible that certain information changes over time, becomes inaccurate or incomplete. ERIKS does not guarantee that the information provided on this document is up to date, accurate and complete; the information provided is not intended to be advice. ERIKS shall never be liable for damage resulting from the use of the information provided.

Pressure class	SAE flange size	Pipe size	Surface protection	Max. operation pressure	Article
psi	in	mm		bar	
3000	1/2	22 x 3	Untreated	350	14309762
3000	3/4	25 x 3	Untreated	350	14309812
3000	3/4	28 x 3	Untreated	350	14317635
3000	1	30 x 4	Untreated	320	14309861
3000	1	35 x 4	Untreated	320	14309863
3000	1.1/4	38 x 4	Untreated	280	14309918
3000	1.1/4	42 x 3	Untreated	280	14309920
3000	1.1/2	38 x 4	Untreated	210	14309968
3000	1.1/2	42 x 3	Untreated	210	14309970
3000	1.1/2	48.3 x 5.0	Untreated	210	14309973
3000	2	60.3 x 5.6	Untreated	210	14310029
3000	2.1/2	76.1 x 7.1	Untreated	175	14310078
3000	3	76.1 x 7.1	Untreated	160	14310121
6000	1/2	20 x 3	Untreated	420	14310251
6000	3/4	20 x 3	Untreated	420	14310297
6000	3/4	25 x 4	Untreated	420	14310300
6000	1	30 x 4	Untreated	420	14310337
6000	1.1/4	30 x 4	Untreated	420	14480178
6000	1.1/4	38 x 6	Untreated	420	14480179
6000	1.1/2	38 x 6	Untreated	420	14480180
6000	1.1/2	48.3 x 8	Untreated	420	14310413
6000	1.1/2	60.3 x 10	Untreated	420	14310417
6000	2	60.3 x 10	Untreated	420	14310452
6000	2	76.1 x 12.5	Untreated	420	14310456

Disclaimer: The content of this document has been composed with the utmost care. However, it is possible that certain information changes over time, becomes inaccurate or incomplete. ERIKS does not guarantee that the information provided on this document is up to date, accurate and complete; the information provided is not intended to be advice. ERIKS shall never be liable for damage resulting from the use of the information provided.