



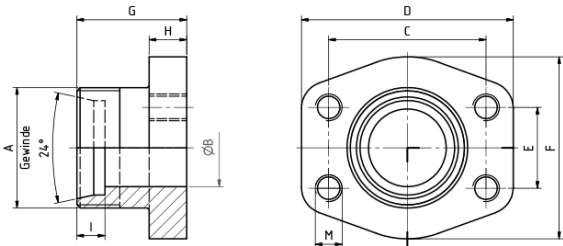
HAVIT SAE flange metric tapped 24° companion DIN 3901 GFG

Characteristics

- Series:** GFG
- Flange type:** SAE counter flange DIN 3901-3092
- Material:** Steel
- Thread form:** Metric 24° cone

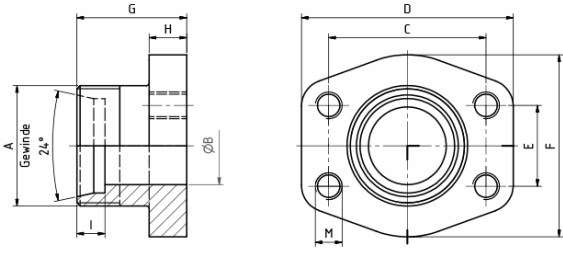
Size table:

Pressure class	SAE flange size	A	B	C	D	E	F	G	H
3000	1/2	M 22x1.5	12	38.1	54	17.5	46	36	13
3000	1/2	M 24x1.5	12	38.1	54	17.5	46	36	13
3000	3/4	M 30x2	16	47.6	65	22.3	50	36	14
3000	3/4	M 30x2	19	47.6	65	22.3	50	36	14
3000	1	M 30x2	16/25	52.4	70	26.2	55	38	16
3000	1	M 30x2	19	52.4	70	26.2	55	38	16
3000	1	M 36x2	20/25	52.4	70	26.2	55	38	16
3000	1	M 36x2	24	52.4	70	26.2	55	38	16
3000	1.1/4	M 36x2	24	58.7	79	30.2	68	41	14
3000	1.1/4	M 42x2	25	58.7	79	30.2	68	41	14
3000	1.1/4	M 45x2	29	58.7	79	30.2	68	41	14
3000	1.1/2	M 52x2	32/36	69.9	93	35.7	78	45	16
3000	1.1/2	M 52x2	36	69.9	93	35.7	78	45	16
6000	1/2	M 24x1.5	12	40.5	54	18.2	46	36	16
6000	3/4	M 24x1.5	12	50.8	70	23.8	55	38	19
6000	3/4	M 30x2	16	50.8	70	23.8	55	38	19
6000	3/4	M 36x2	19	50.8	70	23.8	55	40	19
6000	1	M 30x2	16	57.2	81	27.8	65	42	24



Disclaimer: The content of this document has been composed with the utmost care. However, it is possible that certain information changes over time, becomes inaccurate or incomplete. ERIKS does not guarantee that the information provided on this document is up to date, accurate and complete; the information provided is not intended to be advice. ERIKS shall never be liable for damage resulting from the use of the information provided.

Size table:



Pressure class	SAE flange size	A	B	C	D	E	F	G	H
6000	1	M 42x2	25	57.2	81	27.8	65	42	23
6000	1.1/4	M 42x2	25	66.6	95	31.8	78	60	24
6000	1.1/4	M 52x2	29	66.6	95	31.8	78	60	24
6000	1.1/2	M 52x2	32	79.3	112	36.5	94	55	30

Pressure class psi	SAE flange size in	Surface protection	Thread size	Max. operation pressure bar	Article
3000	1/2	Untreated	15L - M22x1.5	315	14309675
3000	1/2	Untreated	16S - M24x1.5	350	14309677
3000	3/4	Untreated	20S - M30x2.0	345	14309681
3000	3/4	Untreated	22L - M30x2.0	160	14309679
3000	1	Untreated	20S - M30x2.0	320	14309688
3000	1	Untreated	22L - M30x2.0	160	14309683
3000	1	Untreated	25S - M36x2.0	320	14309690
3000	1	Untreated	28L - M36x2.0	160	14309685
3000	1.1/4	Untreated	28L - M36x2.0	160	14309691
3000	1.1/4	Untreated	30S - M42x2.0	280	14309695
3000	1.1/4	Untreated	35L - M45x2.0	160	14309693
3000	1.1/2	Untreated	38S - M52x2.0	210	14309699
3000	1.1/2	Untreated	42L - M52x2.0	160	14309697
6000	1/2	Untreated	16S - M24x1.5	420	14309704
6000	3/4	Untreated	16S - M24x1.5	420	14309706
6000	3/4	Untreated	20S - M30x2.0	420	14309708
6000	3/4	Untreated	25S - M36x2.0	420	14309710
6000	1	Untreated	20S - M30x2.0	420	14309714
6000	1	Untreated	30S - M42x2.0	420	14309717
6000	1.1/4	Untreated	30S - M42x2.0	420	14309720
6000	1.1/4	Untreated	38S - M52x2.0	420	14309723
6000	1.1/2	Untreated	38S - M52x2.0	420	14309725

Disclaimer: The content of this document has been composed with the utmost care. However, it is possible that certain information changes over time, becomes inaccurate or incomplete. ERIKS does not guarantee that the information provided on this document is up to date, accurate and complete; the information provided is not intended to be advice. ERIKS shall never be liable for damage resulting from the use of the information provided.