

OLEO TECNICA SAE pipe threaded flange BSP-companion GFX

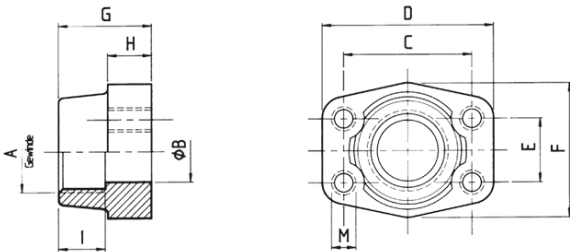


Characteristics

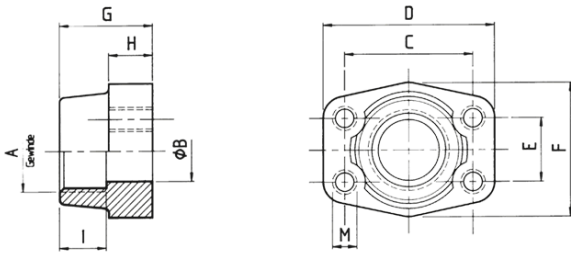
- Series:** GFX
- Flange type:** SAE BSP counter flange
- Material:** Stainless steel 316 Ti [1.4571]
- Thread form:** BSP

Size table:

Pressure class	SAE flange size	A	B	C	D	E	F	G	H
3000	1/2	G 1/2"	13	38.1	54	17.5	46	36	16
3000	1/2	G 3/8"	13	38.1	54	17.5	46	36	16
3000	3/4	G 1/2"	13	47.6	65	22.3	50	36	18
3000	3/4	G 3/4"	19	47.6	65	22.3	50	36	18
3000	1	G 1"	25	52.4	70	26.2	55	38	18
3000	1	G 3/4"	19	52.4	70	26.2	55	35	21
3000	1.1/4	G 1.1/4"	32	58.7	79	30.2	68	41	21
3000	1.1/4	G 1"	25	58.7	81	30.2	65	42	25
3000	1.1/2	G 1.1/2"	38	69.9	93	35.7	78	45	25
3000	1.1/2	G 1.1/4"	32	69.9	95	35.7	78	45	27
3000	2	G 1.1/2"	38	77.8	102	42.9	90	45	25
3000	2	G 2"	51	77.8	102	42.9	90	45	25
3000	2.1/2	G 2"	51	88.9	114	50.8	105	50	25
3000	3	G 2.1/2"	63	106.4	134	61.9	124	50	27
3000	3	G 3"	73	106.4	134	61.9	124	50	27
3000	3.1/2	G 3.1/2"	89	120.7	152	69.9	136	48	27
3000	3.1/2	G 3"	73	120.7	152	69.9	136	48	27
3000	4	G 3.1/2"	89	130.2	162	77.8	146	48	27
3000	4	G 4"	99	130.2	162	77.8	146	48	27
6000	1/2	G 1/2"	13	40.5	54	18.2	46	36	16
6000	1/2	G 3/8"	13	40.5	54	18.2	46	36	16
6000	3/4	G 1/2"	13	50.8	71	23.8	55	35	21
6000	3/4	G 3/4"	19	50.8	71	23.8	55	35	21
6000	1	G 1"	25	57.2	81	27.8	65	42	25
6000	1	G 3/4"	19	57.2	81	27.8	65	42	25
6000	1.1/4	G 1"	25	66.6	95	31.8	78	45	27



Disclaimer: The content of this document has been composed with the utmost care. However, it is possible that certain information changes over time, becomes inaccurate or incomplete. ERIKS does not guarantee that the information provided on this document is up to date, accurate and complete; the information provided is not intended to be advice. ERIKS shall never be liable for damage resulting from the use of the information provided.



Size table:

Pressure class	SAE flange size	A	B	C	D	E	F	G	H
6000	1.1/2	G 1.1/2"	38	79.3	112	36.5	94	50	30
6000	1.1/2	G 1.1/4"	32	79.3	112	36.5	94	50	30
6000	2	G 1.1/2"	38	96.8	134	44.5	114	65	37
6000	2	G 2"	51	96.8	134	44.5	114	65	37

Pressure class	SAE flange size	Thread size	Max. operation pressure	Article
psi	in		bar	
3000	1/2	G 1/2"	350	14471372
3000	1/2	G 3/8"	350	14471373
3000	3/4	G 1/2"	350	14471386
3000	3/4	G 3/4"	350	14471385
3000	1	G 1"	320	13358370
3000	1	G 3/4"	320	14471394
3000	1.1/4	G 1.1/4"	280	13358372
3000	1.1/4	G 1"	280	14471400
3000	1.1/2	G 1.1/2"	210	13390552
3000	1.1/2	G 1.1/4"	210	14471410
3000	2	G 1.1/2"	210	14471421
3000	2	G 2"	210	14471420
3000	2.1/2	G 2"	175	14471430
3000	3	G 2.1/2"	160	14471437
3000	3	G 3"	160	14471436
3000	3.1/2	G 3.1/2"	35	14471441
3000	3.1/2	G 3"	35	14471442
3000	4	G 3.1/2"	35	14471448
3000	4	G 4"	35	14471447
6000	1/2	G 1/2"	420	14471456
6000	1/2	G 3/8"	420	14471457
6000	3/4	G 1/2"	420	14471467
6000	3/4	G 3/4"	420	14471466
6000	1	G 1"	420	13358377
6000	1	G 3/4"	420	14471475
6000	1.1/4	G 1"	420	14471486
6000	1.1/2	G 1.1/2"	420	14471495
6000	1.1/2	G 1.1/4"	420	14471496
6000	2	G 1.1/2"	420	14471507
6000	2	G 2"	420	14471506

Disclaimer: The content of this document has been composed with the utmost care. However, it is possible that certain information changes over time, becomes inaccurate or incomplete. ERIKS does not guarantee that the information provided on this document is up to date, accurate and complete; the information provided is not intended to be advice. ERIKS shall never be liable for damage resulting from the use of the information provided.