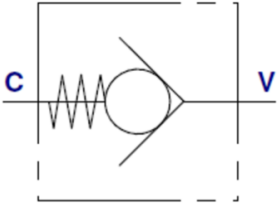


VOLZ GRUPPE Check valve NPT RSVI - NPT SS 316Ti



Characteristics

Version: Inline mounting

Material: Stainless steel



Opening pressure	Max. operating pressure bar	Connections	Article
1 bar	250	1" NPT	14309950
1 bar	400	1/4" NPT	14309961
1 bar	400	1/8" NPT	14309965
1 bar	400	3/4" NPT	14309969
1 bar	400	3/8" NPT	14309974

Disclaimer: The content of this document has been composed with the utmost care. However, it is possible that certain information changes over time, becomes inaccurate or incomplete. ERIKS does not guarantee that the information provided on this document is up to date, accurate and complete; the information provided is not intended to be advice. ERIKS shall never be liable for damage resulting from the use of the information provided.