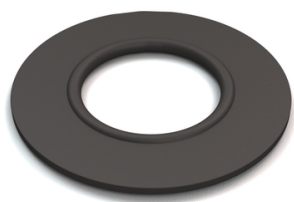


ERIKS ELASTOMET OR EPDM-KIWA EN 1514-1 IBC



Characteristics

Series: ELASTOMET

Type: OR

Norm: EN 1514-1 IBC

Hardness (Sh A): 70 Sh A

Colour: Black

Temperature range: -45 / 150 °C

Max. pressure: 40 bar

Suitable for medium: Weak Acids, Alkalis, Water
[process water], Water, Acids, Potable water, Air
[compressed air], Weak Alkalis

Application

- Recommended in: Chemical

Number of inserts	Nominal diameter	Flange pressure stage	Outer diameter	Inner diameter	Thickness	Flange standard	Article
			mm	mm	mm		
1	DN20	PN10/40	61	27	3/4	EN 1092-1 RF	14249240
1	DN25	PN10/40	71	34	3/4	EN 1092-1 RF	14249241
1	DN32	PN10/40	82	43	3/4	EN 1092-1 RF	14249242
1	DN40	PN10/40	92	49	3/4	EN 1092-1 RF	14249243
1	DN50	PN10/40	107	61	3/4	EN 1092-1 RF	14249244
1	DN65	PN10/40	127	77	3/4	EN 1092-1 RF	14249245
1	DN80	PN10/40	142	89	3/4	EN 1092-1 RF	14249246
1	DN100	PN10/16	162	115	4/5	EN 1092-1 RF	14249247
1	DN125	PN10/16	192	141	4/5	EN 1092-1 RF	14249248
1	DN150	PN10/16	218	169	4/5	EN 1092-1 RF	14249249
1	DN200	PN10/16	273	220	5/6	EN 1092-1 RF	14249250
1	DN250	PN10	328	273	5/6	EN 1092-1 RF	14249251
1	DN300	PN10	378	324	5/6	EN 1092-1 RF	14249252
1	DN350	PN10	438	356	6/7.2	EN 1092-1 RF	14249253
1	DN400	PN10	489	407	6/7.2	EN 1092-1 RF	14249254
1	DN450	PN10	539	458	6/7.2	EN 1092-1 RF	14249255
1	DN500	PN10	594	508	6/7.2	EN 1092-1 RF	14249256
1	DN600	PN10	695	610	6/7.2	EN 1092-1 RF	14249257
1	DN700	PN10	810	712	7/8.4	EN 1092-1 RF	14249258
1	DN800	PN10	917	813	7/8.4	EN 1092-1 RF	14249259
1	DN900	PN10	1017	915	7/8.4	EN 1092-1 RF	14249260

Disclaimer: The content of this document has been composed with the utmost care. However, it is possible that certain information changes over time, becomes inaccurate or incomplete. ERIKS does not guarantee that the information provided on this document is up to date, accurate and complete; the information provided is not intended to be advice. ERIKS shall never be liable for damage resulting from the use of the information provided.