

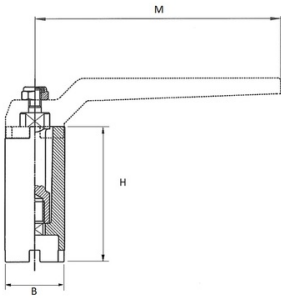
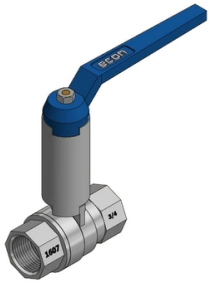
ECON® Stem extension Type: 1607X Aluminium

Characteristics

Type: 1607X

Material: Aluminium

Spindle material: CW614N



Size table			
DN	B	H	M
1/4" - 3/8" - 1/2"	24.5	61.5	95
3/4" - 1"	28	63	115
1.1/4"	32	64.5	130
1.1/2"	38	64.5	140
2"	47	64.5	170
2.1/2"	47	64.5	170
3"	54	64.5	235

DN full bore	Height mm	Article
1601-4-7 1.1/2" + 1602 2"	60	13392819
1601-4-7 1.1/4" + 1602 1.1/2"	60	13488633
1601-4-7 1/4"-1/2" + 1602 1/4"-3/4"	60	13488631
1601-4-7 2"	60	13488634
1601-4-7 3/4"-1 + 1602 1"-1.1/4"	60	13488632
1604 2.1/2"	60	13488635

Disclaimer: The content of this document has been composed with the utmost care. However, it is possible that certain information changes over time, becomes inaccurate or incomplete. ERIKS does not guarantee that the information provided on this document is up to date, accurate and complete; the information provided is not intended to be advice. ERIKS shall never be liable for damage resulting from the use of the information provided.