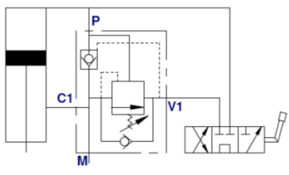


## OLEODINAMICA MARCHESINI Differential valve, type VRSP



This valve allows the recovery the oil from port C1 connected to the rod side and pass it to the head side of the cylinder via port P, therefore adding it to the pump flow rate. When the cylinder head side pressure achieves the setting value, oil from the rod side is sent to tank through port V1, restoring a non-regenerative system with the maximum force. The shut off pressure of the regenerative circuit depends only on the head side of the cylinder.

### Characteristics

**Version:** Inline mounting

**Material:** Steel



Steering pressure ratio	Max. operating pressure bar	Max. oilflow l/min	Adjustment range	Connections	Article
1:4,5	350	60	50 - 100 bar	1/2" BSP	14229192
1:5,5	350	95	60 - 110 bar	3/4" BSP	14229193

Disclaimer: The content of this document has been composed with the utmost care. However, it is possible that certain information changes over time, becomes inaccurate or incomplete. ERIKS does not guarantee that the information provided on this document is up to date, accurate and complete; the information provided is not intended to be advice. ERIKS shall never be liable for damage resulting from the use of the information provided.