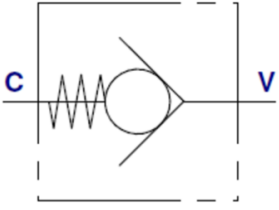


## OLEODINAMICA MARCHESINI Non-return valve, type VUI



Check valves allow free flow in one direction and blocks the flow in the reverse direction, used to keep a hydraulic system pressurised.

Material:

- Body: zinc-plated steel.
- Seals: BUNA N.
- BSP ports.

### Characteristics

**Material:** Steel



Opening pressure	Max. operating pressure bar	Max. oilflow l/min	Connections	Article
0,7 bar	350	50	1/2" BSP	14229077
0,9 bar	350	80	3/4" BSP	14229078
1,8 bar	350	30	3/8" BSP	14229076
2,2 bar	350	20	1/4" BSP	14229075

Disclaimer: The content of this document has been composed with the utmost care. However, it is possible that certain information changes over time, becomes inaccurate or incomplete. ERIKS does not guarantee that the information provided on this document is up to date, accurate and complete; the information provided is not intended to be advice. ERIKS shall never be liable for damage resulting from the use of the information provided.