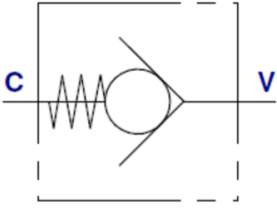


## OLEODINAMICA MARCHESINI Non-return valve, type VU MM



Check valves allow free flow in one direction and blocks the flow in the reverse direction, used to keep a hydraulic system pressurised.

Material:

- Body: zinc-plated steel.
- Internal parts: hardened and ground steel.
- Seals: BUNA N.
- BSP ports.

### Characteristics

**Version:** Inline mounting

**Material:** Steel



| Opening pressure | Max. operating pressure<br>bar | Max. oilflow<br>l/min | Connections | Article  |
|------------------|--------------------------------|-----------------------|-------------|----------|
| 1 bar            | 320                            | 150                   | 1" BSP      | 14229071 |
| 1 bar            | 320                            | 240                   | 1.1/2" BSP  | 14229073 |
| 1 bar            | 320                            | 300                   | 1.1/4" BSP  | 14229072 |
| 1 bar            | 320                            | 650                   | 2" BSP      | 14229074 |
| 1 bar            | 350                            | 8                     | 1/4" BSP    | 14229067 |
| 1 bar            | 350                            | 20                    | 3/8" BSP    | 14229068 |
| 1 bar            | 350                            | 50                    | 1/2" BSP    | 14229069 |
| 1 bar            | 350                            | 90                    | 3/4" BSP    | 14229070 |

Disclaimer: The content of this document has been composed with the utmost care. However, it is possible that certain information changes over time, becomes inaccurate or incomplete. ERIKS does not guarantee that the information provided on this document is up to date, accurate and complete; the information provided is not intended to be advice. ERIKS shall never be liable for damage resulting from the use of the information provided.