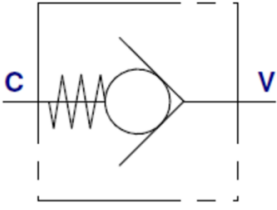


OLEODINAMICA MARCHESINI Non-return valve, type VU MM



Check valves allow free flow in one direction and blocks the flow in the reverse direction, used to keep a hydraulic system pressurised.

Material:

- Body: zinc-plated steel.
- Internal parts: hardened and ground steel.
- Seals: BUNA N.
- BSP ports.

Characteristics

Version: Inline mounting

Material: Steel



Opening pressure	Max. operating pressure bar	Max. oilflow l/min	Connections	Article
1 bar	320	150	1" BSP	14229071
1 bar	320	240	1.1/2" BSP	14229073
1 bar	320	300	1.1/4" BSP	14229072
1 bar	320	650	2" BSP	14229074
1 bar	350	8	1/4" BSP	14229067
1 bar	350	20	3/8" BSP	14229068
1 bar	350	50	1/2" BSP	14229069
1 bar	350	90	3/4" BSP	14229070

Disclaimer: The content of this document has been composed with the utmost care. However, it is possible that certain information changes over time, becomes inaccurate or incomplete. ERIKS does not guarantee that the information provided on this document is up to date, accurate and complete; the information provided is not intended to be advice. ERIKS shall never be liable for damage resulting from the use of the information provided.