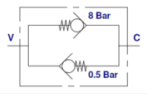


OLEODINAMICA MARCHESINI Bidirectional non-return valve, type VRC



In the bidirectional check valve flow is controlled in both directions at different pressure setting.

Material:

- Body: zinc-plated steel.
- Internal parts: hardened and ground steel.
- Ports: BSP.

Characteristics

Version: Inline mounting

Material: Steel



Opening pressure	Max. operating pressure bar	Max. oilflow l/min	Connections	Article
0,5 - 8 bar	350	35	3/8" BSP	13634875
0,5 - 8 bar	350	55	1/2" BSP	14229095

Disclaimer: The content of this document has been composed with the utmost care. However, it is possible that certain information changes over time, becomes inaccurate or incomplete. ERIKS does not guarantee that the information provided on this document is up to date, accurate and complete; the information provided is not intended to be advice. ERIKS shall never be liable for damage resulting from the use of the information provided.