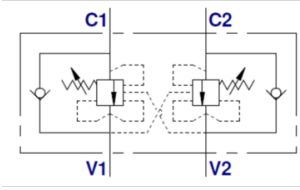


## OLEODINAMICA MARCHESINI Double-acting counterbalance valve for control valve in middle position, closed, type VBCD DE CC



These valves are used to control the actuator movements and block in both directions. In order to have the descent of a load under control and avoid the load's weight being carried away the valve will prevent any cavitation of the actuator. This valve is ideal when normal overcentre valves don't work properly as it's not sensitive to back pressure.

Material:

- Body: zinc-plated steel.
- Internal parts: hardened and ground steel.
- Seals: BUNA N.

Setting:

- Standard setting: 320 bar.

Valve setting must be at least 1,3 times more than load pressure in order to enable the valve to close even when subjected to the maximum load pressure.

- BSP ports.



### Characteristics

**Version:** Inline mounting

**Type of valve:** Double standard for closed center

**Material:** Steel

Steering pressure ratio	Max. operating pressure bar	Max. oilflow l/min	Adjustment range	Connections	Article
1:3,1	350	35	120 - 320 bar	3/8" BSP	14228965
1:3,1	350	50	120 - 320 bar	1/2" BSP	14228967
1:4,5	350	35	120 - 320 bar	3/8" BSP	14228966
1:5,5	350	105	120 - 320 bar	3/4" BSP	14228969
1:8	350	50	120 - 320 bar	1/2" BSP	14228968
1:8	350	105	120 - 320 bar	3/4" BSP	14228970

Disclaimer: The content of this document has been composed with the utmost care. However, it is possible that certain information changes over time, becomes inaccurate or incomplete. ERIKS does not guarantee that the information provided on this document is up to date, accurate and complete; the information provided is not intended to be advice. ERIKS shall never be liable for damage resulting from the use of the information provided.