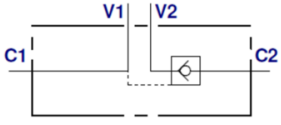


## OLEODINAMICA MARCHESINI Pilot-operated single-acting non-return valve VBPSE 2 CEXC



Pilot check valves are used to block a cylinder in one directions. The oil flow pass freely in one direction and is blocked in the opposite direction until pilot pressure is applied.

Material:

- Body: zinc-plated steel.
- Internal parts: hardened and ground steel.
- Seals: BUNA N.

Mounting:

- Pipemounting: DIN 2353.



### Characteristics

**Version:** Inline mounting

**Type of valve:** Single

**Material:** Steel

Steering pressure ratio	Opening pressure	Max. operating pressure bar	Max. oilflow l/min	Connections	Article
1:5	3 bar	350	50	1/2" BSP	14228926
1:5,5	4 bar	350	20	1/4" BSP	14228924
1:5,5	4 bar	350	30	3/8" BSP	14228925

Disclaimer: The content of this document has been composed with the utmost care. However, it is possible that certain information changes over time, becomes inaccurate or incomplete. ERIKS does not guarantee that the information provided on this document is up to date, accurate and complete; the information provided is not intended to be advice. ERIKS shall never be liable for damage resulting from the use of the information provided.