



## ECON® Electric actuator Series: ELSA Type: 7917 Spring return

### Characteristics

**Series:** ELSA  
**Type:** 7917  
**Transmission:** Quarter turn  
**Top flange standard:** ISO 5211  
**Explosion-proof:** No  
**Spring return:** Yes  
**Emergency manual operation:** Yes  
**Potential free switch contact:** Yes  
**Torque switch:** No  
**With mechanical setting indicator:** Yes  
**Material housing:** Aluminium  
**Material cover:** Aluminium  
**Surface protection:** Polyester coated  
**Material shaft:** Steel  
**Material mounting garniture:** Stainless steel  
**Min. ambient temperature:** -30 °C  
**Max. ambient temperature:** 70 °C

### Application

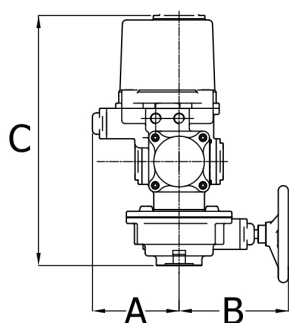
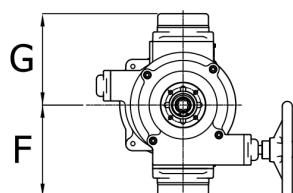
- Suitable for ball valves, ball check valves, butterfly valves and valves without stuffing box/plug valves.
- Industrial and maritime applications.

### Technical Information

- Connection voltage: 24VDC and 24VAC; 1 phase 50/60Hz: 115VAC and 230VAC ± 10%; 3 phases 50/60Hz: 230VAC, 380VAC and 440VAC ± 10%.
- Provided with heater for anti-condensation.
- Thermal protection of the electric motor.
- Protection class: IP67 or IP68 (7m/72h).
- Ambient temperature: -30°C to +70°C.
- Fail-safe position: Normally closed. However, a fail-safe open position is also possible.

### Options

- Potentiometer (0~1 kΩ or 0~5 kΩ).
- Proportional control unit for modulating applications (input, output 2~10 VDC, 4~20 mA).
- Floating control: The actuator can thus be stopped in any intermediary position (0° to 90°).
- For larger fail-safe actuators, electro-hydraulic actuators from ECON can be supplied with a torque of up to 250,000 Nm.
- Explosion-proof housing according to: Ex dB IIB T4 GB, Ex tb IIIC T130°C dB.



Size table:

Model	A mm	B mm	C mm	F mm	G mm	Weight kg
ELSA50	171	216	539	180	180	27
ELSA130	247	237	642	231	231	57.5
ELSA200	305	284	736	300	300	95
ELSA260	305	284	736	300	300	95

Disclaimer: The content of this document has been composed with the utmost care. However, it is possible that certain information changes over time, becomes inaccurate or incomplete. ERIKS does not guarantee that the information provided on this document is up to date, accurate and complete; the information provided is not intended to be advice. ERIKS shall never be liable for damage resulting from the use of the information provided.

Model	Mounting Flange	Shaft (A)	Depth of Shaft (B)	Torque	Motor Power	Weight in kg	
	ISO 5211	mm	mm			Nm	Watt
ELSA50	F07	17	30	50	50	27	37
ELSA130	F10	22	41	130	130	57,5	74,5
ELSA200	F12	27	45	200	130	95	135
ELSA260	F12	27	45	260	130	95	135

Model	Connection voltage	Mounting flange	Square dimensions	Torque	Level of protection (IP value)	Type of regulation	Article
			mm				
ELSA50	24V DC	F07	17	50	IP68	Open-close	14190990
ELSA50	230V AC	F07	17	50	IP68	Open-close	14190987
ELSA130	24V DC	F10	22	130	IP68	Open-close	14190991
ELSA130	230V AC	F10	22	130	IP67	Open-close	13524582
ELSA130	230V AC	F10	22	130	IP68	Open-close	14190988
ELSA200	24V DC	F12	27	200	IP68	Open-close	14190992
ELSA200	24V DC	F12	27	200	IP67	Open-close	13524586
ELSA200	230V AC	F12	27	200	IP67	Open-close	13524580
ELSA200	230V AC	F12	27	200	IP68	Open-close	14190986
ELSA260	24V DC	F12	27	260	IP68	Open-close	14190993
ELSA260	24V DC	F12	27	260	IP67	Open-close	13524587
ELSA260	230V AC	F12	27	260	IP68	Open-close	14190989
ELSA260	230V AC	F12	27	260	IP67	Open-close	13524583

Disclaimer: The content of this document has been composed with the utmost care. However, it is possible that certain information changes over time, becomes inaccurate or incomplete. ERIKS does not guarantee that the information provided on this document is up to date, accurate and complete; the information provided is not intended to be advice. ERIKS shall never be liable for damage resulting from the use of the information provided.