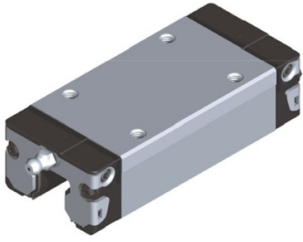


EWELLIX Carriage series LLRHC..LU



Characteristics

- Series:** LLRHC
- Construction type:** LU
- Construction width:** Narrow
- Construction length:** Long
- Construction height:** Standard
- Material:** Steel

| Manufacturer ID | Size | Preload class | Accuracy class | Width mm | Height mm | Length mm | Article |
|------------------|------|---------------|----------------|-------------|--------------|--------------|----------|
| LLRHC 15LU-T0-P5 | 15 | T0 | P5 | 34 | 19.9 | 72.6 | 24024658 |
| LLRHC 15LU-T1-P3 | 15 | T1 | P3 | 34 | 19.9 | 72.6 | 12175904 |
| LLRHC 15LU-T1-P5 | 15 | T1 | P5 | 34 | 19.9 | 72.6 | 24024659 |
| LLRHC 20LU-T0-P5 | 20 | T0 | P5 | 44 | 25.35 | 91 | 24024698 |
| LLRHC 20LU-T1-P3 | 20 | T1 | P3 | 44 | 25.35 | 91 | 12175811 |
| LLRHC 20LU-T1-P5 | 20 | T1 | P5 | 44 | 25.35 | 91 | 24024699 |
| LLRHC 25LU-T0-P3 | 25 | T0 | P3 | 48 | 29.9 | 107.9 | 12175817 |
| LLRHC 25LU-T0-P5 | 25 | T0 | P5 | 48 | 29.9 | 107.9 | 24024742 |
| LLRHC 25LU-T1-P3 | 25 | T1 | P3 | 48 | 29.9 | 107.9 | 12175813 |
| LLRHC 25LU-T1-P5 | 25 | T1 | P5 | 48 | 29.9 | 107.9 | 24024743 |
| LLRHC 30LU-T0-P3 | 30 | T0 | P3 | 60 | 35.35 | 119.7 | 12175825 |
| LLRHC 30LU-T0-P5 | 30 | T0 | P5 | 60 | 35.35 | 119.7 | 24024794 |
| LLRHC 30LU-T1-P3 | 30 | T1 | P3 | 60 | 35.35 | 119.7 | 12175821 |
| LLRHC 30LU-T1-P5 | 30 | T1 | P5 | 60 | 35.35 | 119.7 | 24024795 |
| LLRHC 35LU-T0-P3 | 35 | T0 | P3 | 70 | 40.4 | 139 | 12175833 |
| LLRHC 35LU-T0-P5 | 35 | T0 | P5 | 70 | 40.4 | 139 | 24024847 |
| LLRHC 35LU-T1-P3 | 35 | T1 | P3 | 70 | 40.4 | 139 | 12175829 |
| LLRHC 35LU-T1-P5 | 35 | T1 | P5 | 70 | 40.4 | 139 | 24024848 |
| LLRHC 45LU-T0-P5 | 45 | T0 | P5 | 86 | 50.3 | 174.1 | 24024888 |
| LLRHC 45LU-T1-P5 | 45 | T1 | P5 | 86 | 50.3 | 174.1 | 24024889 |

Disclaimer: The content of this document has been composed with the utmost care. However, it is possible that certain information changes over time, becomes inaccurate or incomplete. ERIKS does not guarantee that the information provided on this document is up to date, accurate and complete; the information provided is not intended to be advice. ERIKS shall never be liable for damage resulting from the use of the information provided.