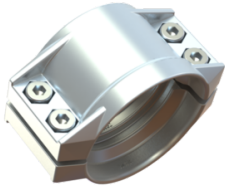


GOODALL Safety clamps, aluminium type RK Flexoline



Application

- for mounting hose barbs with safety collar on rubber or plastic hoses with thinner wall thickness
- suitable for all industries
- In combination with the appropriate tailpiece a safe connection is achieved
- usable for all couplings with tailpiece according to EN 14420-2

Working pressure

25 bar

Material

- clamping shell: aluminum
- Bolts and nuts: steel, zinc-plated

Note

one clamp shell consists of: 2 shells, 4 bolts and 4 nuts

Complete assembly

ERIKS can assemble the desired combination of hose, couplings and clamping shells for you.

Features

Type

: Clampshell

Material

: aluminum

Characteristics

Type: Safety clamp

Material: Aluminium

Clamping range mm	Hose ID x Wall Thickness	Article
112 / 114	100x6,5	11446774
47 / 49	38x5	11446769
59 / 61	50x5	11446771
86 / 88	75x6	11446773
34 / 36	25x5	11446767
41 / 43	32x5	11446768
74 / 76	63x6	11446772

Disclaimer: The content of this document has been composed with the utmost care. However, it is possible that certain information changes over time, becomes inaccurate or incomplete. ERIKS does not guarantee that the information provided on this document is up to date, accurate and complete; the information provided is not intended to be advice. ERIKS shall never be liable for damage resulting from the use of the information provided.