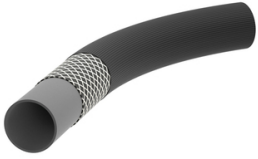


Hose Gamma Heavy Duty Black, NBR lay flat industrial water and fire hose with special profile



Characteristics

Series: Gamma Heavy Duty

Application

- lay flat, abrasion resistant water and industrial transport hose
- also suitable at shipboard, refineries or construction sites
- also used as a fire hose

Technical Information

Temperature range

- -30 °C to +100 °C

Burst pressure

- minimum 30 bar
- safety factor 3:1

Construction

Tube

- black NBR rubber
- smooth

Reinforcement

- 2 braided polyester fabrics with high tensile strength

Cover

- black NBR rubber
- ozone and weather resistant
- oil resistant
- special profile which makes the hose extremely abrasion resistant

Execution

Connections

- Storz, DSP, Guillemin

Assembly

- stainless steel wire or FIXXED hose clamps

Approval

- DIN 14811 class 3
- prEN 1924 class 4
- BS 6391:2009 type 3
- NEN 2242

Internal diameter	Wall thickness	Outer diameter	Maximum operating pressure	Minimum burst pressure	Roll length	Weight	Article
mm	mm	mm	bar	bar	m	kg/m	
25	1.7	28.4	20	60	40	0.22	12935013
32	2.1	36.2	20	60	40	0.28	12935014
38	2.1	42.2	20	60	40	0.33	12935015
45	2.3	49.6	20	60	40	0.38	12935016
52	2.3	56.6	17	50	40	0.44	12935017
64	2.3	68.6	17	50	40	0.57	12935018
70	2.6	75.2	17	50	40	0.62	12935019
75	2.6	80.2	17	50	40	0.7	12935020
102	3	108	13	40	40	1.12	12935021
152	3	158	10	30	40	1.75	12935022

Disclaimer: The content of this document has been composed with the utmost care. However, it is possible that certain information changes over time, becomes inaccurate or incomplete. ERIKS does not guarantee that the information provided on this document is up to date, accurate and complete; the information provided is not intended to be advice. ERIKS shall never be liable for damage resulting from the use of the information provided.