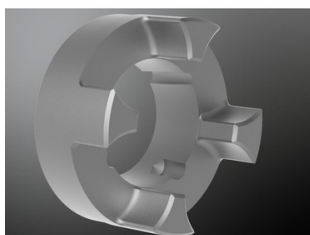


KTR ROTEX Coupling hub with taper bore



Characteristics

Series: Rotex

Type	Size	Version	Material	Bore mm	Article
Hub	19	Part 1a	Steel	9.7	23559561
Hub	19	Part 1a	Steel	9.85	23559559
Hub	19	Part 1a	Steel	9.85	13203958
Hub	19	Part 1a	Steel	14	23559562
Hub	19	Part 1	Aluminium	9.7	23559576
Hub	19	Part 1	Aluminium	9.85	23559575
Hub	24	Part 1a	Steel	9.7	23559611
Hub	24	Part 1a	Steel	9.7	13203972
Hub	24	Part 1a	Steel	9.85	13203971
Hub	24	Part 1a	Steel	14	23559612
Hub	24	Part 1a	Steel	16.85	13203973
Hub	24	Part 1a	Steel	16.85	14088931
Hub	24	Part 1a	Steel	17.287	23559614
Hub	24	Part 1a	Steel	17.287	13203974
Hub	24	Part 1a	Steel	17.287	13203975
Hub	24	Part 1a	Steel	17.287	24205161
Hub	24	Part 1a	Steel	19.85	13203976
Hub	24	Part 1	Aluminium	9.7	13203982
Hub	24	Part 1	Aluminium	16.85	13203983
Hub	24	Part 1	Aluminium	16.85	23559636
Hub	24	Part 1	Aluminium	17.287	13203985
Hub	24	Part 1	Aluminium	17.287	13203984
Hub	28	Part 1a	Steel	14	13203997
Hub	28	Part 1a	Steel	16.85	23559676
Hub	28	Part 1a	Steel	16.85	23208130
Hub	28	Part 1a	Steel	17.287	23559678
Hub	28	Part 1a	Steel	17.287	23559677
Hub	28	Part 1a	Steel	17.287	13203998
Hub	28	Part 1a	Steel	17.287	13203999
Hub	28	Part 1a	Steel	19.85	13204000
Hub	28	Part 1a	Steel	22.002	23559680
Hub	28	Part 1a	Steel	24.85	23559681
Hub	28	Part 1	Aluminium	17.287	23559701
Hub	28	Part 1	Aluminium	17.287	23559700
Hub	28	Part 1	Aluminium	22.002	23559702
Hub	38	Part 1	Cast iron	16.85	23208077
Hub	38	Part 1	Cast iron	16.85	13204017
Hub	38	Part 1	Cast iron	17.287	23559732
Hub	38	Part 1	Cast iron	17.287	23559733
Hub	38	Part 1	Cast iron	22.002	23559735
Hub	38	Part 1	Cast iron	24.85	23559736
Hub	42	Part 1	Cast iron	16.85	13204037
Hub	42	Part 1	Cast iron	17.287	13204038

Disclaimer: The content of this document has been composed with the utmost care. However, it is possible that certain information changes over time, becomes inaccurate or incomplete. ERIKS does not guarantee that the information provided on this document is up to date, accurate and complete; the information provided is not intended to be advice. ERIKS shall never be liable for damage resulting from the use of the information provided.

Type	Size	Version	Material	Bore mm	Article
Hub	42	Part 1	Cast iron	22.002	23559792
Hub	42	Part 1	Cast iron	22.002	13204039
Hub	42	Part 1	Cast iron	24.85	13204040

Disclaimer: The content of this document has been composed with the utmost care. However, it is possible that certain information changes over time, becomes inaccurate or incomplete. ERIKS does not guarantee that the information provided on this document is up to date, accurate and complete; the information provided is not intended to be advice. ERIKS shall never be liable for damage resulting from the use of the information provided.