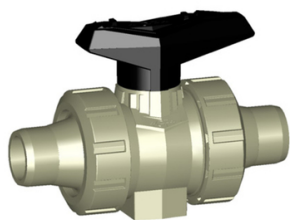


GF Ball valve Series: 546 PP-H Plastic welded end PN10



Characteristics

Series: 546
Construction type: 2-way
Housing construction: 3-part
Housing material: PP-H
Connection: Plastic welded end
Pressure rating: PN10
Manual operation: Handle
With locking device:
Material ball: PP-H
Seat material: PTFE

Nominal inner diameter	External tube diameter of connection	Face to Face norm	Bore	Spindle material	Primary spindle seal material	Secondary spindle seal material	Body seal	Minimum medium temperature [continuous]	Maximum medium temperature [continuous]	Article
mm								°C	°C	
DN10	16	Manufacturer standard			EPDM	EPDM	EPDM			11290998
DN10	16	Manufacturer standard		PP	FPM (FKM)	FPM (FKM)	FPM (FKM)			11291055
DN15	20	Manufacturer standard	Full bore	PP	FPM (FKM)	FPM (FKM)	FPM (FKM)	10	95	11291086
DN15	20	Manufacturer standard			EPDM	EPDM	EPDM			11290999
DN15	20	Manufacturer standard	Full bore	PP	EPDM	EPDM	EPDM			11291070
DN20	25		Full bore	PP	EPDM	EPDM	EPDM			11291071
DN20	25	Manufacturer standard			EPDM	EPDM	EPDM			11291000
DN25	32	Manufacturer standard	Full bore	PP	EPDM	EPDM	EPDM	10	95	11291072
DN25	32	Manufacturer standard			EPDM	EPDM	EPDM			11291001
DN32	40	Manufacturer standard	Full bore	PP	EPDM	EPDM	EPDM	10	95	11291083
DN32	40	Manufacturer standard			EPDM	EPDM	EPDM			11291002
DN40	50	Manufacturer standard	Full bore	PP	EPDM	EPDM	EPDM	10	95	11291084
DN40	50	Manufacturer standard			EPDM	EPDM	EPDM			11291053
DN50	63	Manufacturer standard	Full bore	PP	EPDM	EPDM	EPDM	10	95	11291085
DN50	63	Manufacturer standard			EPDM	EPDM	EPDM			11291054
DN65	75	Manufacturer standard	Full bore	PP	EPDM	EPDM	EPDM			11531721

Disclaimer: The content of this document has been composed with the utmost care. However, it is possible that certain information changes over time, becomes inaccurate or incomplete. ERIKS does not guarantee that the information provided on this document is up to date, accurate and complete; the information provided is not intended to be advice. ERIKS shall never be liable for damage resulting from the use of the information provided.