

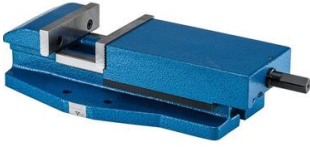
FORMAT Machine clamp mechanic type 3823

Design: Body made from special cast iron, hardened and ground clamping jaws.

Application: For rapid clamping of workpieces on drilling machines.

Supplied: Machine vice with hand crank.

Note: Replacement jaws [Order No. 3840, 3841 and 3842].



Clamping/chucking range mm	Article
85	12742142
105	12742144
125	12742146
145	12742148

Disclaimer: The content of this document has been composed with the utmost care. However, it is possible that certain information changes over time, becomes inaccurate or incomplete. ERIKS does not guarantee that the information provided on this document is up to date, accurate and complete; the information provided is not intended to be advice. ERIKS shall never be liable for damage resulting from the use of the information provided.