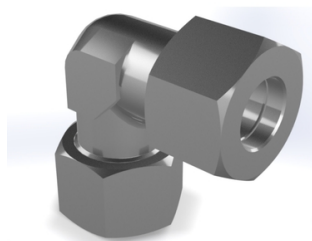


VOLZ GRUPPE Equal elbow WV / XWV SS 316Ti



- Equal elbow
- L and S series
- Complete [WV] or without nut and cutting ring [XWV]
- Roestvaststaal 1.4571 (316Ti)

Characteristics

Series: WV

Material: Stainless steel 316 Ti (1.4571)

Adjustable: No

Connection 1: Cutting ring connection

Connection 2: Cutting ring connection

Designation	Manufacturer ID	Connection size 1	Connection size 2	Nominal pressure	Article
W04LL	WV 04LL	4LL - M8x1.0	4LL - M8x1.0	PN100	14311917
W06L	WV 06L	6L - M12x1.5	6L - M12x1.5	PN500	14308000
W06LL	WV 06LL	6LL - M10x1.0	6LL - M10x1.0	PN100	14308222
W06S	WV 06S	6S - M14x1.5	6S - M14x1.5	PN800	14308328
W08L	WV 08L	8L - M14x1.5	8L - M14x1.5	PN500	14307813
W08LL	WV 08LL	8LL - M12x1.0	8LL - M12x1.0	PN100	14308410
W08S	WV 08S	8S - M16x1.5	8S - M16x1.5	PN800	14308527
W10L	WV 10L	10L - M16x1.5	10L - M16x1.5	PN500	14306222
W10LL	WV 10LL	10LL - M14x1	10LL - M14x1	PN100	14314370
W10S	WV 10S	10S - M18x1.5	10S - M18x1.5	PN800	14307536
W12L	WV 12L	12L - M18x1.5	12L - M18x1.5	PN400	14306201
W12LL	WV 12LL	12LL - M16x1	12LL - M16x1	PN100	14314371
W12S	WV 12S	12S - M20x1.5	12S - M20x1.5	PN630	14308651
W14S	WV 14S	14S - M22x1.5	14S - M22x1.5	PN630	14308702
W15L	WV 15L	15L - M22x1.5	15L - M22x1.5	PN400	14306335
W16S	WV 16S	16S - M24x1.5	16S - M24x1.5	PN630	14306695
W18L	WV 18L	18L - M26x1.5	18L - M26x1.5	PN400	14306697
W20S	WV 20S	20S - M30x2.0	20S - M30x2.0	PN420	14306859
W22L	WV 22L	22L - M30x2.0	22L - M30x2.0	PN250	14306715
W25S	WV 25S	25S - M36x2.0	25S - M36x2.0	PN420	14306244
W28L	WV 28L	28L - M36x2.0	28L - M36x2.0	PN250	14306666
W30S	WV 30S	30S - M42x2.0	30S - M42x2.0	PN420	14311919
W35L	WV 35L	35L - M45x2.0	35L - M45x2.0	PN250	14311921
W38S	WV 38S	38S - M52x2.0	38S - M52x2.0	PN420	14306490
W42L	WV 42L	42L - M52x2.0	42L - M52x2.0	PN250	14306434
W04LL -m+d	XWV 04LL	4LL - M8x1.0	4LL - M8x1.0	PN100	14314186
W06L -m+d	XWV 06L	6L - M12x1.5	6L - M12x1.5	PN500	14314187
W06LL -m+d	XWV 06LL	6LL - M10x1.0	6LL - M10x1.0	PN100	14314188
W06S -m+d	XWV 06S	6S - M14x1.5	6S - M14x1.5	PN800	14314189
W08L -m+d	XWV 08L	8L - M14x1.5	8L - M14x1.5	PN500	14308367
W08LL -m+d	XWV 08LL	8LL - M12x1.0	8LL - M12x1.0	PN100	14314190
W08S -m+d	XWV 08S	8S - M16x1.5	8S - M16x1.5	PN800	14314191
W10L -m+d	XWV 10L	10L - M16x1.5	10L - M16x1.5	PN500	14308615
W10S -m+d	XWV 10S	10S - M18x1.5	10S - M18x1.5	PN800	14314192
W12L -m+d	XWV 12L	12L - M18x1.5	12L - M18x1.5	PN400	14307723
W12S -m+d	XWV 12S	12S - M20x1.5	12S - M20x1.5	PN630	14307717
W14S -m+d	XWV 14S	14S - M22x1.5	14S - M22x1.5	PN630	14314193
W15L -m+d	XWV 15L	15L - M22x1.5	15L - M22x1.5	PN400	14307202
W16S -m+d	XWV 16S	16S - M24x1.5	16S - M24x1.5	PN630	14307546

Disclaimer: The content of this document has been composed with the utmost care. However, it is possible that certain information changes over time, becomes inaccurate or incomplete. ERIKS does not guarantee that the information provided on this document is up to date, accurate and complete; the information provided is not intended to be advice. ERIKS shall never be liable for damage resulting from the use of the information provided.

Designation	Manufacturer ID	Connection size 1	Connection size 2	Nominal pressure	Article
W18L -m+d	XWV 18L	18L - M26x1.5	18L - M26x1.5	PN400	14308238
W20S -m+d	XWV 20S	20S - M30x2.0	20S - M30x2.0	PN420	14308056
W22L -m+d	XWV 22L	22L - M30x2.0	22L - M30x2.0	PN250	14308033
W25S -m+d	XWV 25S	25S - M36x2.0	25S - M36x2.0	PN420	14307117
W28L -m+d	XWV 28L	28L - M36x2.0	28L - M36x2.0	PN250	14306298
W30S -m+d	XWV 30S	30S - M42x2.0	30S - M42x2.0	PN420	14306652
W35L -m+d	XWV 35L	35L - M45x2.0	35L - M45x2.0	PN250	14314194
W38S -m+d	XWV 38S	38S - M52x2.0	38S - M52x2.0	PN420	14306879
W42L -m+d	XWV 42L	42L - M52x2.0	42L - M52x2.0	PN250	14314195

Disclaimer: The content of this document has been composed with the utmost care. However, it is possible that certain information changes over time, becomes inaccurate or incomplete. ERIKS does not guarantee that the information provided on this document is up to date, accurate and complete; the information provided is not intended to be advice. ERIKS shall never be liable for damage resulting from the use of the information provided.