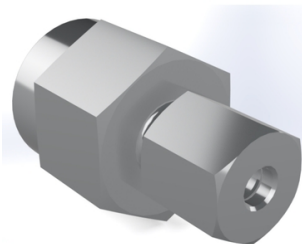


VOLZ GRUPPE Pressure gauge connector MAV / XMAV - R SS 316Ti



- Pressure gauge connector
- L and S series
- Thread: female BSP
- Sealing by internal metallic sealing ring (DKRI)
- Complete (MAV) or without nut and cutting ring (XMAV)
- Stainless steel 1.4571 (316Ti)

Characteristics

Series: MAV-R

Material: Stainless steel 316 Ti (1.4571)

Adjustable: No

Connection 1: Cutting ring connection

Connection 2: Internal thread

Designation	Manufacturer ID	Connection size 1	Connection size 2	Nominal pressure	Article
MAV06LR1/2	MAV 06L R1/2	6L - M12x1.5	1/2" BSP cyl.	PN315	14308713
MAV06LR1/4	MAV 06L R1/4	6L - M12x1.5	1/4" BSP cyl.	PN315	14306230
MAV06SR1/2	MAV 06S R1/2	6S - M14x1.5	1/2" BSP cyl.	PN630	14309436
MAV08LR1/2	MAV 08L R1/2	8L - M14x1.5	1/2" BSP cyl.	PN315	14310906
MAV08LR1/4	MAV 08L R1/4	8L - M14x1.5	1/4" BSP cyl.	PN315	14309439
MAV08SR1/2	MAV 08S R1/2	8S - M16x1.5	1/2" BSP cyl.	PN630	14309441
MAV08SR1/4	MAV 08S R1/4	8S - M16x1.5	1/4" BSP cyl.	PN630	14309443
MAV10LR1/2	MAV 10L R1/2	10L - M16x1.5	1/2" BSP cyl.	PN315	14310908
MAV10LR1/4	MAV 10L R1/4	10L - M16x1.5	1/4" BSP cyl.	PN315	14309452
MAV10SR1/2	MAV 10S R1/2	10S - M18x1.5	1/2" BSP cyl.	PN630	14309453
MAV12LR1/2	MAV 12L R1/2	12L - M18x1.5	1/2" BSP cyl.	PN315	14309571
MAV12LR1/4	MAV 12L R1/4	12L - M18x1.5	1/4" BSP cyl.	PN315	14310911
MAV12SR1/2	MAV 12S R1/2	12S - M20x1.5	1/2" BSP cyl.	PN630	14309574
MAV06LR1/2 -m+d	XMAV 06L R1/2	6L - M12x1.5	1/2" BSP cyl.	PN315	14313827
MAV06LR1/4 -m+d	XMAV 06L R1/4	6L - M12x1.5	1/4" BSP cyl.	PN315	14313828
MAV06SR1/2 -m+d	XMAV 06S R1/2	6S - M14x1.5	1/2" BSP cyl.	PN630	14307962
MAV08LR1/2 -m+d	XMAV 08L R1/2	8L - M14x1.5	1/2" BSP cyl.	PN315	14313830
MAV08LR1/4 -m+d	XMAV 08L R1/4	8L - M14x1.5	1/4" BSP cyl.	PN315	14313831
MAV08SR1/2 -m+d	XMAV 08S R1/2	8S - M16x1.5	1/2" BSP cyl.	PN630	14313833
MAV08SR1/4 -m+d	XMAV 08S R1/4	8S - M16x1.5	1/4" BSP cyl.	PN630	14306527
MAV10LR1/2 -m+d	XMAV 10L R1/2	10L - M16x1.5	1/2" BSP cyl.	PN315	14313835
MAV10LR1/4 -m+d	XMAV 10L R1/4	10L - M16x1.5	1/4" BSP cyl.	PN315	14308699
MAV10SR1/2 -m+d	XMAV 10S R1/2	10S - M18x1.5	1/2" BSP cyl.	PN630	14308899
MAV12LR1/2 -m+d	XMAV 12L R1/2	12L - M18x1.5	1/2" BSP cyl.	PN315	14313837
MAV12LR1/4 -m+d	XMAV 12L R1/4	12L - M18x1.5	1/4" BSP cyl.	PN315	14308357
MAV12SR1/2 -m+d	XMAV 12S R1/2	12S - M20x1.5	1/2" BSP cyl.	PN630	14306681
MAV12SR1/4 -m+d	XMAV 12S R1/4	12S - M20x1.5	1/4" BSP cyl.	PN630	14314294

Disclaimer: The content of this document has been composed with the utmost care. However, it is possible that certain information changes over time, becomes inaccurate or incomplete. ERIKS does not guarantee that the information provided on this document is up to date, accurate and complete; the information provided is not intended to be advice. ERIKS shall never be liable for damage resulting from the use of the information provided.